

INSTALLATION / USER MANUAL
Fingerprint Scanner module

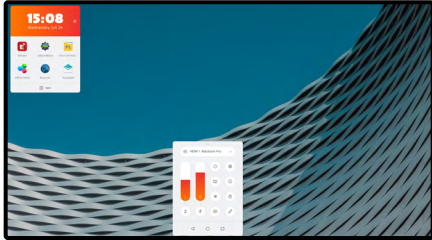
**HEY YOU,
LET ME
HELP!**

CONTENT

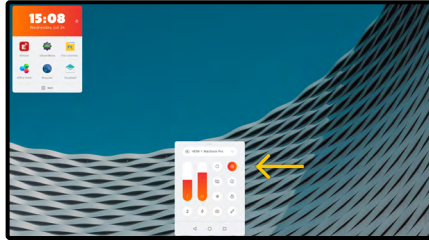
Scan a fingerprint.....	3
Rename a saved fingerprint.....	5
Delete a saved fingerprint.....	5

Fingerprint Scanner module

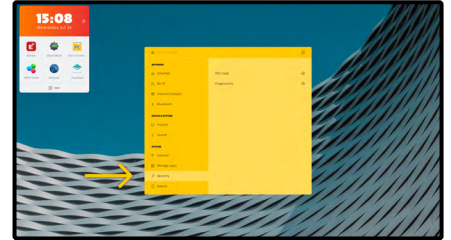
SCAN A FINGERPRINT



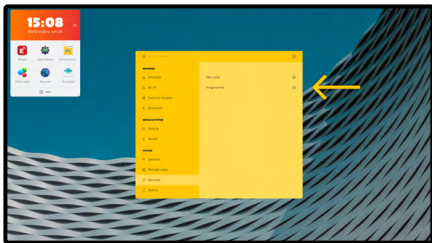
Open the Float Bar



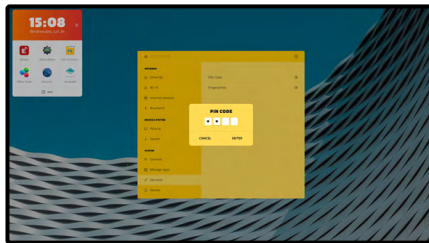
Go to the Settings Menu



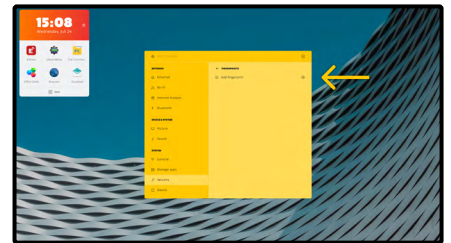
Go to Security



Go to Fingerprints

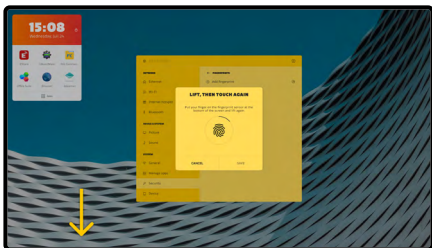


Fill in the PIN code of the display

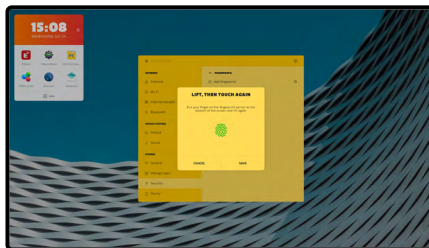


Select Add Fingerprint

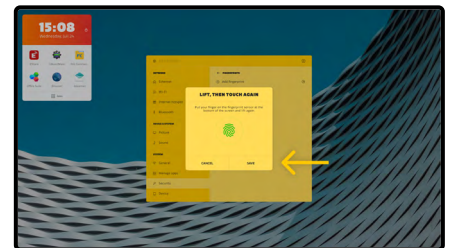
3



Follow the instruction on the pop-up screen: place your finger on the finger scanner module.

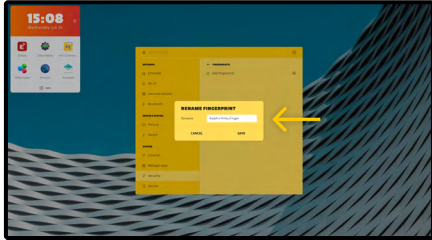


When the scan of your finger is completed successfully, the icon on the pop-up will become green.

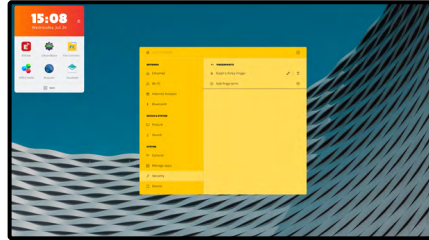


Then press save to save your fingerprint.

- a. A notification will appear when you are moving your finger (too) fast or when your finger is not placed correctly on the finger scanner module.
- b. **Note:** The scanner is located at the bottom of your screen on the outside - You do not need to place your finger on the fingerprint that you see on the screen to scan.



Rename the fingerprint, to make it clear which fingerprint is of which finger/user.



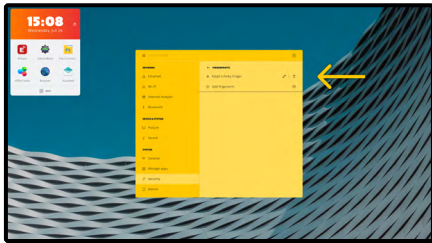
Your fingerprint has been stored successfully.

Note: you can save up to 10 fingerprints on the display.

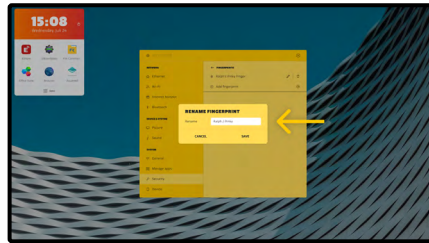
Note: For accessing your OPS computer you need to follow the steps of Windows.

Fingerprint Scanner module

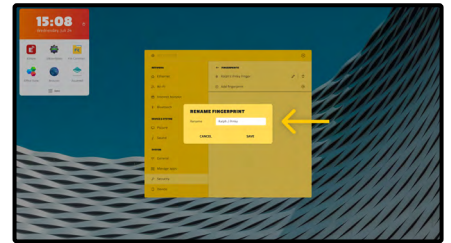
RENAME A SAVED FINGERPRINT



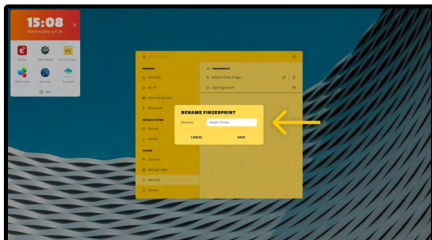
If you want to **change the name** later on, click on the pen icon.



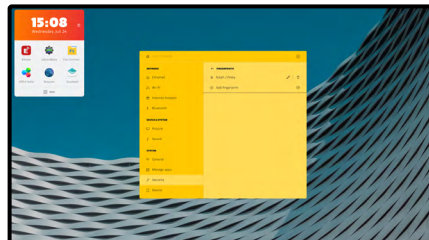
Delete the current name



Fill in the requested name



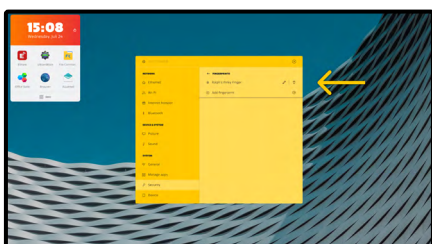
Press on save



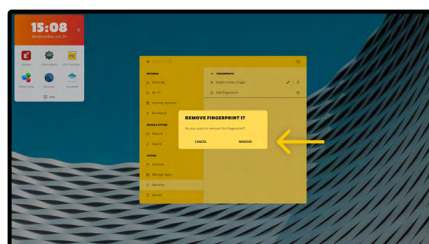
The new name is saved.

5

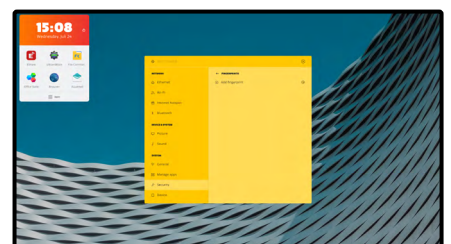
DELETE A SAVED FINGERPRINT



If you want to **delete a fingerprint**, click on the bin icon.



Click on remove in the pop-up window



The fingerprint is deleted.

CTOUCH[®]

1466V200414-EN

Share, inspire, have fun!
With CTOUCH by your side.

ctouch.eu