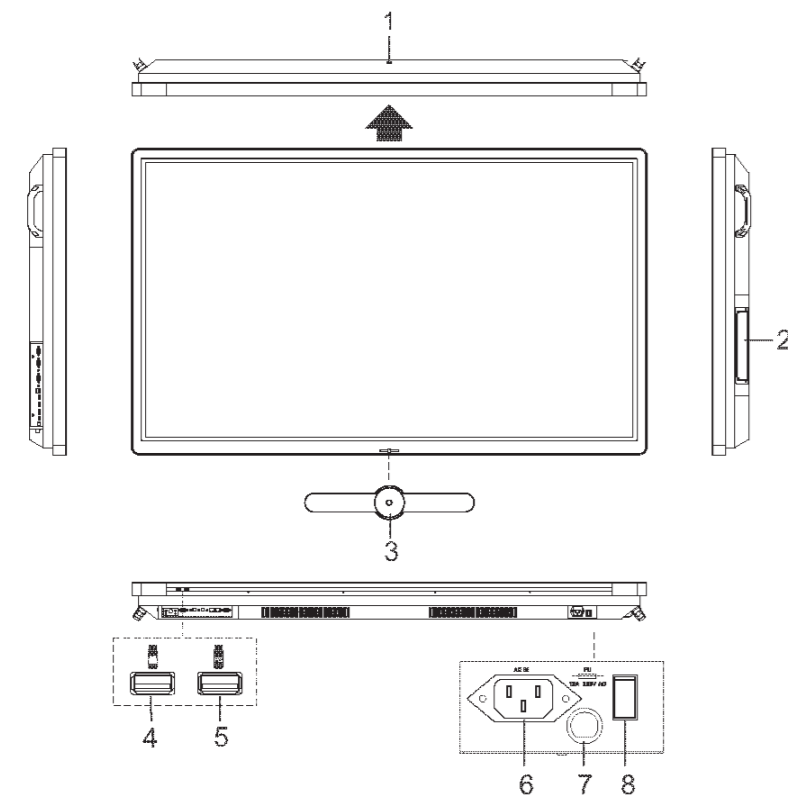
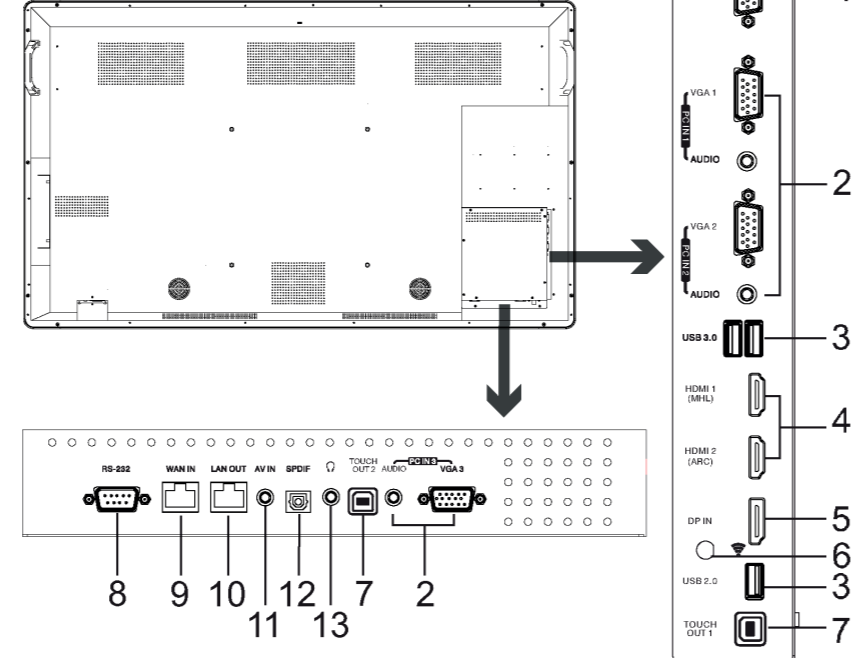


QUICK START GUIDE



The terms HDMI and HDMI High-Definition Multimedia Interface and HDMI Logo are trademarks or registered trademarks of HDMI Licensing LLC in the United States and other countries.



nr.	Description
1 USB(2.0)(for camera)	This port is connected to PC (internal OPS), but is changed to Android if current source is AV, USB or in home page. Notes: 1. Please open the dust cover before being used. 2. It can perfectly support cameras up to 720p.
2 Internal PC module slot	Insert the CTOUCH Easy air PC module (Optional)
3 Power LED	Red: In standby mode. White: In power on mode.
CTOUCH button	
Remote control sensor	Aim the remote control towards this spot on the CTOUCH interactive display.
Power	Press to turn on or off the CTOUCH interactive display. Note: When the CTOUCH interactive display is turned on, press the button in middle to display the navigation bar. Press the button for about 2 seconds and the screen will go into stand-by mode.
4	USB port for the CTOUCH interactive display Android-surrounding.
5	USB port for Easy air PC module. Note: If there is no Easy air PC module inserted, the USB port has no function.
6 AC IN	Plug the AC cord into this jack and into a power outlet. (AC 100-240V 50/60Hz)
7 Fuse	12A 250V
8 Power Switch	Press (1) to connect the power, press (0) to cut off the power. Note: Don't cover the power switch.

nr.	Description
1 VGA OUT	Output of the currently selected PC IN 1/2/3 signal.
2 PC IN1/2/3	Connect the video/audio of a computer to these ports.
3 USB2.0/3.0	Connect USB devices to these ports.
4 HDMI1/2 INPUT	Connect an HDMI or DVI device to this HDMI socket. HDMI1(MHL): Connect a MHL-enabled device such as a smart phone to this jack to view the external device's screen on your screen. HDMI2(ARC): Connect an ARC-enabled home theater receiver to this jack.
5 DP(DisplayPort) INPUT	Connect an external device to DP socket.
6 Antenna	WiFi antenna.
7 TOUCH OUT1/2	Output for external devices connected to PCx or HDMIx ports, supporting touch systems. Note: TOUCH OUT 2 prevails on TOUCH OUT 1 in default. You can define it in the Lock menu.
8 RS232	For remote control of the CTOUCH interactive display.
9 WAN IN	The built-in router input port. Connects the external network.
10 LAN OUT	The built-in router output port. Connects to another computer or other internet enabled devices.
11 AV IN	Input port for composite video.
12 S/PDIF digital audio output	Connect a digital sound system to this S/PDIF socket..
13	Connect headphones to this jack. The current selected source is audible.

NOTE:
If the VGA or HDMI does not get any signal, it will go into stand-by after two minutes. If there is no input on the AV, it will go into stand-by mode after 10 minutes.

BASIC OPERATIONS

- TURNING THE CTOUCH INTERACTIVE DISPLAY ON OR OFF**
1. Plug the power cord into an AC power outlet.
 2. Press the Power Switch on the CTOUCH interactive display.
 3. Now the CTOUCH is in standby mode. Wait a moment until the power indicator lights up, then press button to turn on the CTOUCH interactive display.

IN CASE OF FIRST TIME INSTALLATION

- a. Select the desired menu language, then press **START** and go to the next page.



- b. Select location and go to the next page.



4. Press button again to turn the CTOUCH interactive display into stand-by mode.
5. To cut off the power completely, use the Power Switch.

CAUTIONS BEFORE CONNECTING

- When connecting an external device to the CTOUCH interactive display, make sure that the CTOUCH and external device are turned off.
- Check the plugs at the end of the cables to make sure that they are of proper type before plugging them into the sockets on the CTOUCH interactive display.
- Make sure that all plugs are securely inserted into the sockets. Loose connections can result in image, colour or sound problems.
- The illustration of the external device may be different depending on your model.
- Refer to the operating manual of the external device as well.
- Before using headphones, adjust the device volume to avoid excessive volume, as hearing damage may result.
- The CTOUCH interactive display is designed with multiple USB port (3.0 or 2.0), if you want to connect a USB device, please select the appropriate port.
- Connect TOUCH OUT with USB cable to PC USB port.
- Connect PC with VGA, DP or HDMI cable. Please choose the proper method of connection based on your device.
- This product should be operated only from the type of power source indicated on the marking label.
- Always unplug the AC cord from power outlet when you won't use the screen for a long period of time.

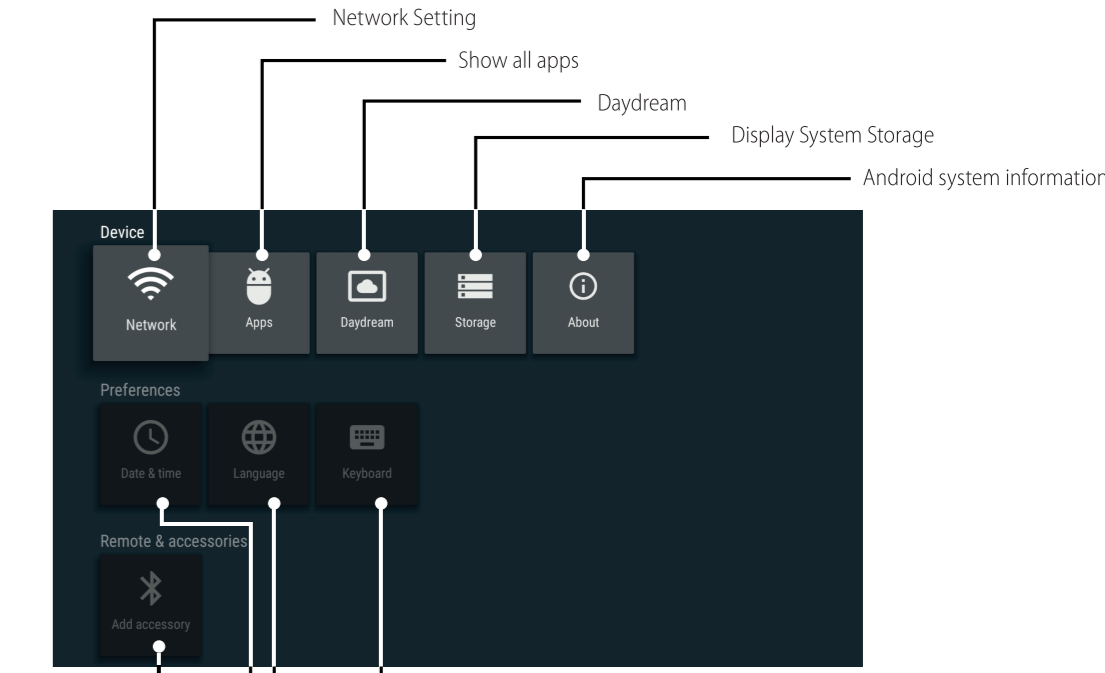
OPERATING THE NAVIGATION BAR



- Display menu**
- Settings menu**
- Source menu**
- User Manual**
- Previous screen**
- Homepage (Android Interface)**
- Application history**
- Annotation**
- Volume bar**
- Turn off the backlight**
- Applications list**

Shortcuts of favorite application

SETTINGS MENU



Default input methods

Android system information

Display System Storage

Daydream

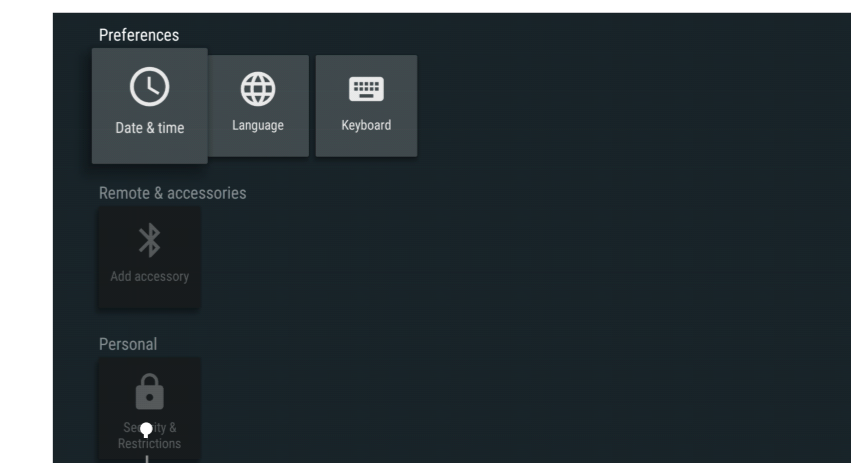
Show all apps

Network Setting

Android language

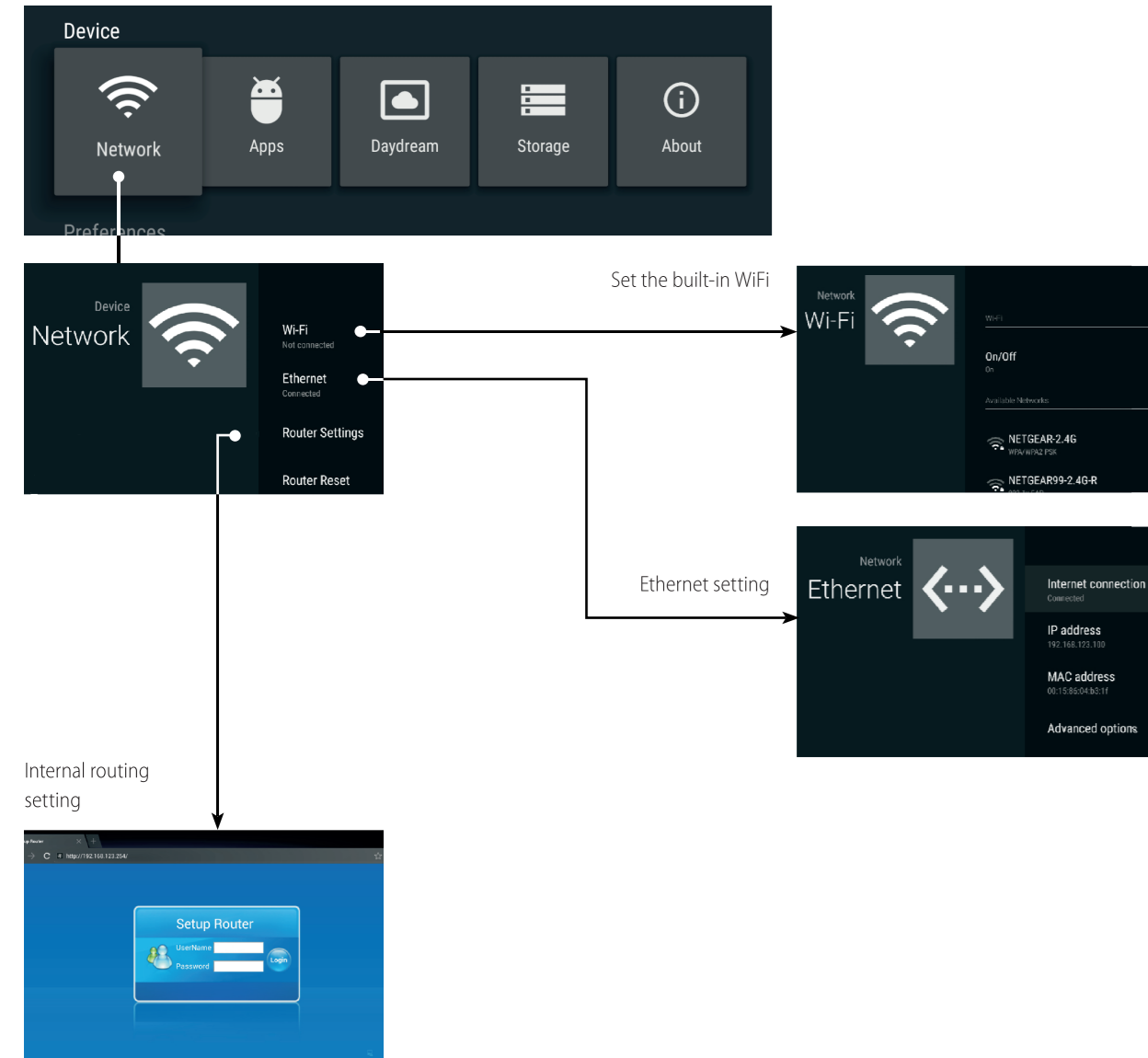
Date and time

Note: To manually set date and time, you should toggle "Automatic date & time" to off.



Security and Restrictions

ANDROID NETWORK SETTINGS



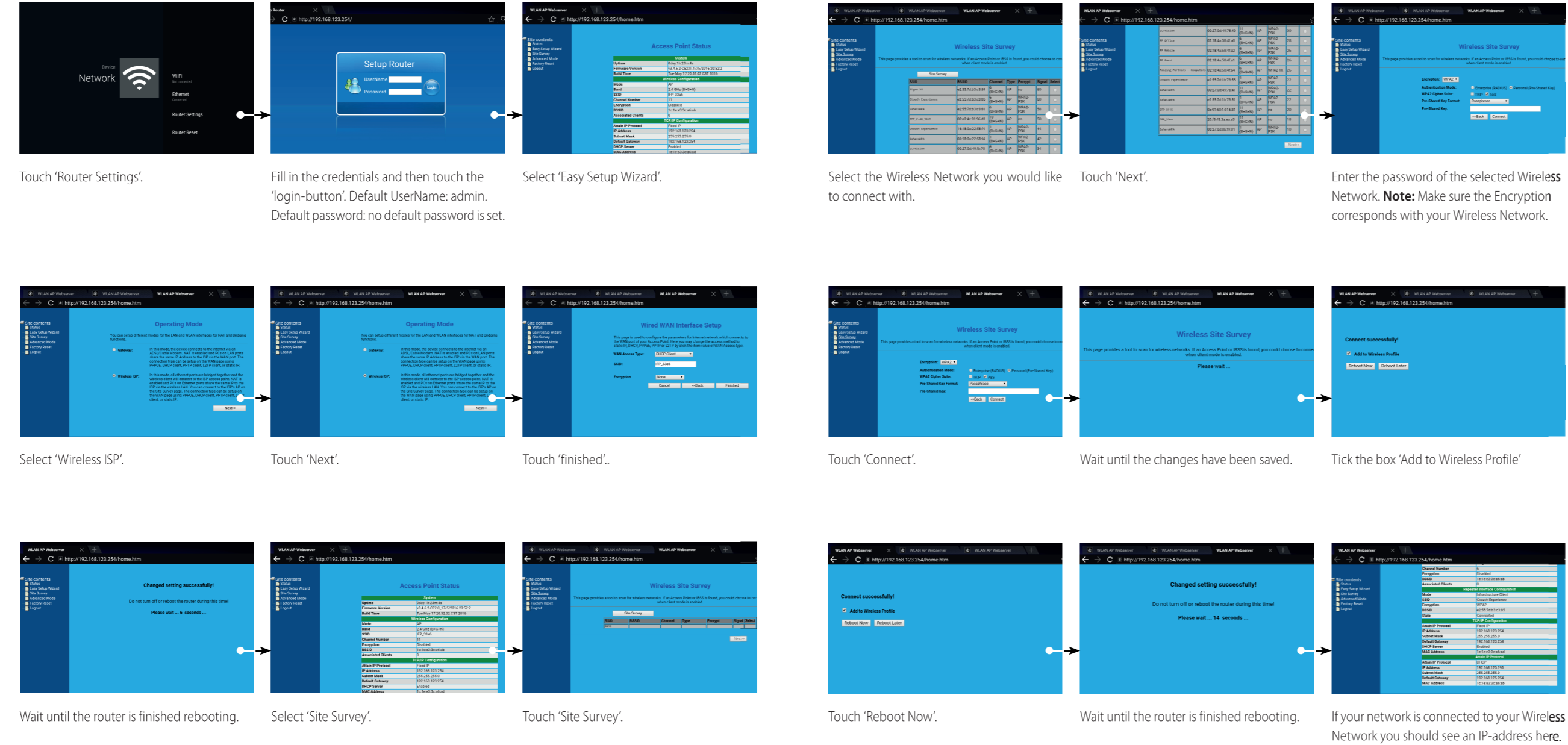
Input the default UserName: admin.
No password entry required by default.

WIRED

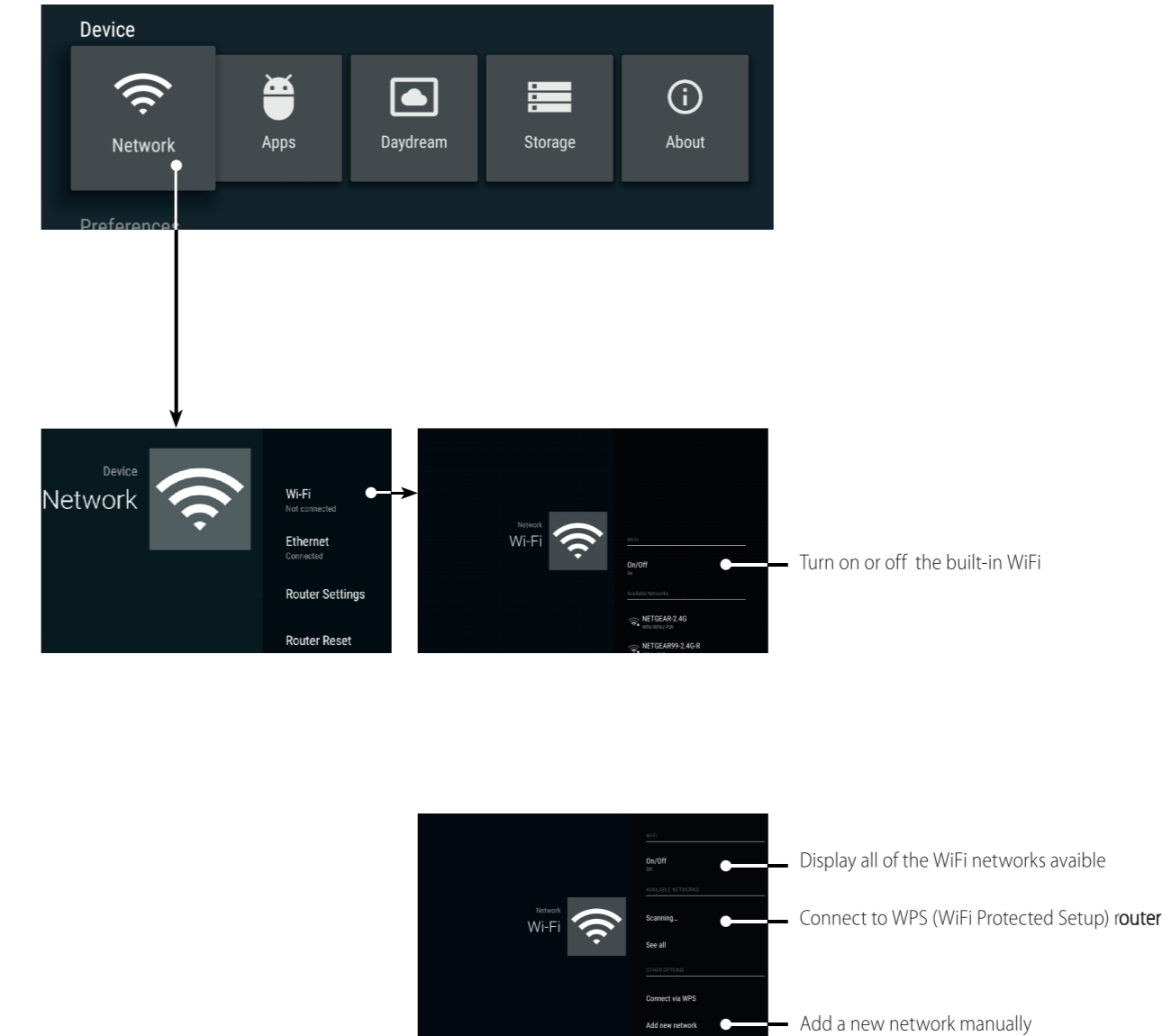
Connect UTP-cable to WAN-port for wired internet.

ROUTER WIRELESS SETTINGS

Network Setting (via internal router). Method 1: Easy Setup Wizard



ANDROID WIRELESS NETWORK SETTINGS



REMOTE CONTROL

