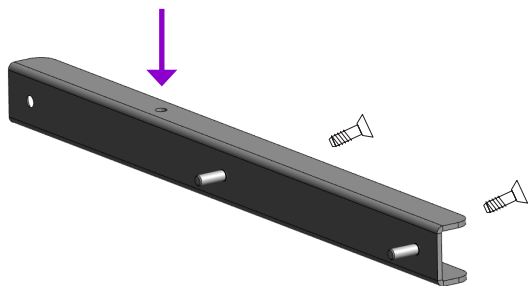
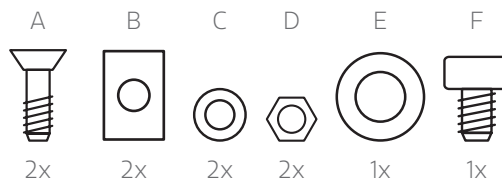


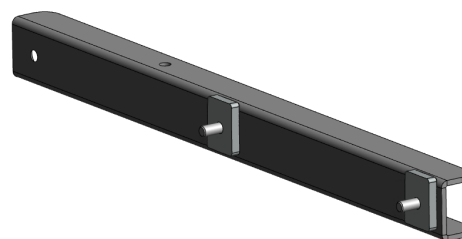
LAPTOP SHELF ACCESSORY 10080261

The Laptop shelf is an accessory product for the Wallom2 Mobile lift. The product is designed to carry laptops with a maximum weight of 10kg. Please note that this product **CANNOT** be mounted on the Wallom2 Wall lift.



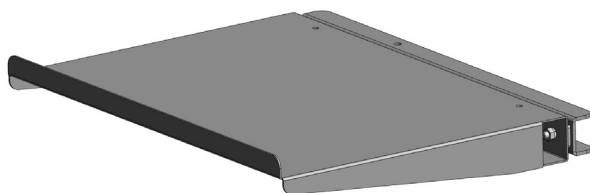
STEP 1

Place the two bolts (A) with the countersunk head inside the U-profile. Make sure that the hole is at the top, as indicated by the arrow in the illustration.



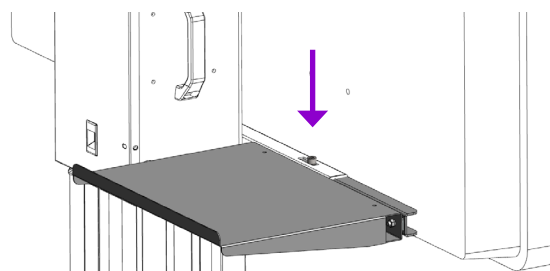
STEP 2

Place the 2 blocks (B) on the bolts. Please ensure that the 2 blocks are in portrait (vertical) position, like illustrated on the picture.



STEP 3

Place the Laptop shelf over the bolts and lock it with the spring lock washer and the nut (C,D). Do this for both of the bolts.

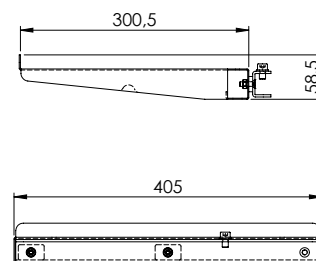
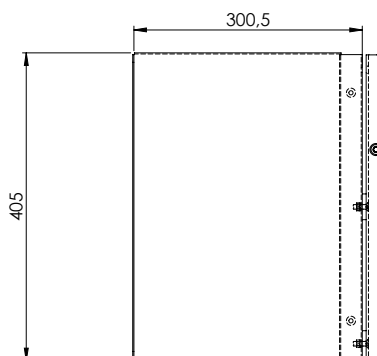
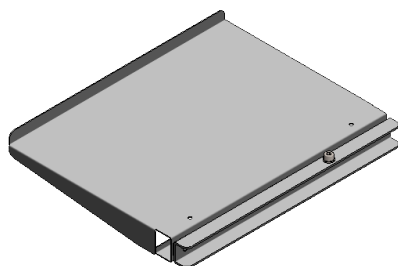


STEP 4

Slide the laptop shelf inside the lowest frame* of the Wallom2 Mobile and secure it with the ring and M8 bolt (E,F). See arrow above.

*You may possibly first need to remove the plastic end cap to create an opening.

TECHNICAL INFORMATION



1197V190227