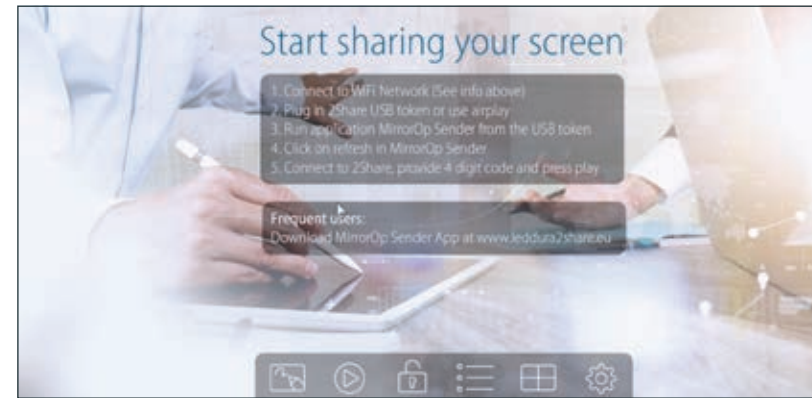


BASIC OPERATION

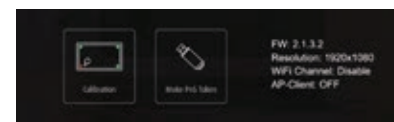
2SHARE OPERATION



Whiteboard



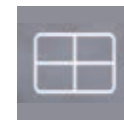
Sender - List



Touch the Calibration function to calibrate the projected signal.
Touch the Make PnS Token to copy the PnS application for Windows and Mac to inserted USB drive.



USB Player - To playback the supported media files from the inserted USB drive.



Split Screen



To enable/disable Conference Control mode



Setup - Display
firmwareversion, resolution,
WiFi channel and AP-client.

REMOTE CONTROL

Switch the CTOUCH interactive display power on or off

To confirm or enter a sub-menu or toggle between options during menu operation.

Display desktop (Home page) on the screen

Display or exit the setting menu screen

Mute the sound

Select aspect ratio

Volume down

Display or exit input source menu

Use Arrow buttons to navigate in on-screen menu.

Return to previous menu or exit the on-screen menu

Turn off the backlight, the screen will go black but the processes will continue (like playing music). Press any button on the remote control again or touch the CTOUCH interactive display glass plate with two fingers in order to turn on the backlight again.

Volume up

Freeze the current picture



These USB tokens are for visitors or adhoc users so no installation of the software is required.

This is step 2 of the "Start sharing your screen" procedure. See picture at 2SHARE Operation.

For PC click on: **"Download&Show_v1071"**
For MAC use Airplay or click on: **"MirrorOp1.0.46.dmg"**

**Nothing will be installed it is only an executable which run the sharing software.
We suggest to place these tokens near the Leddura 2Share (on the table in front).

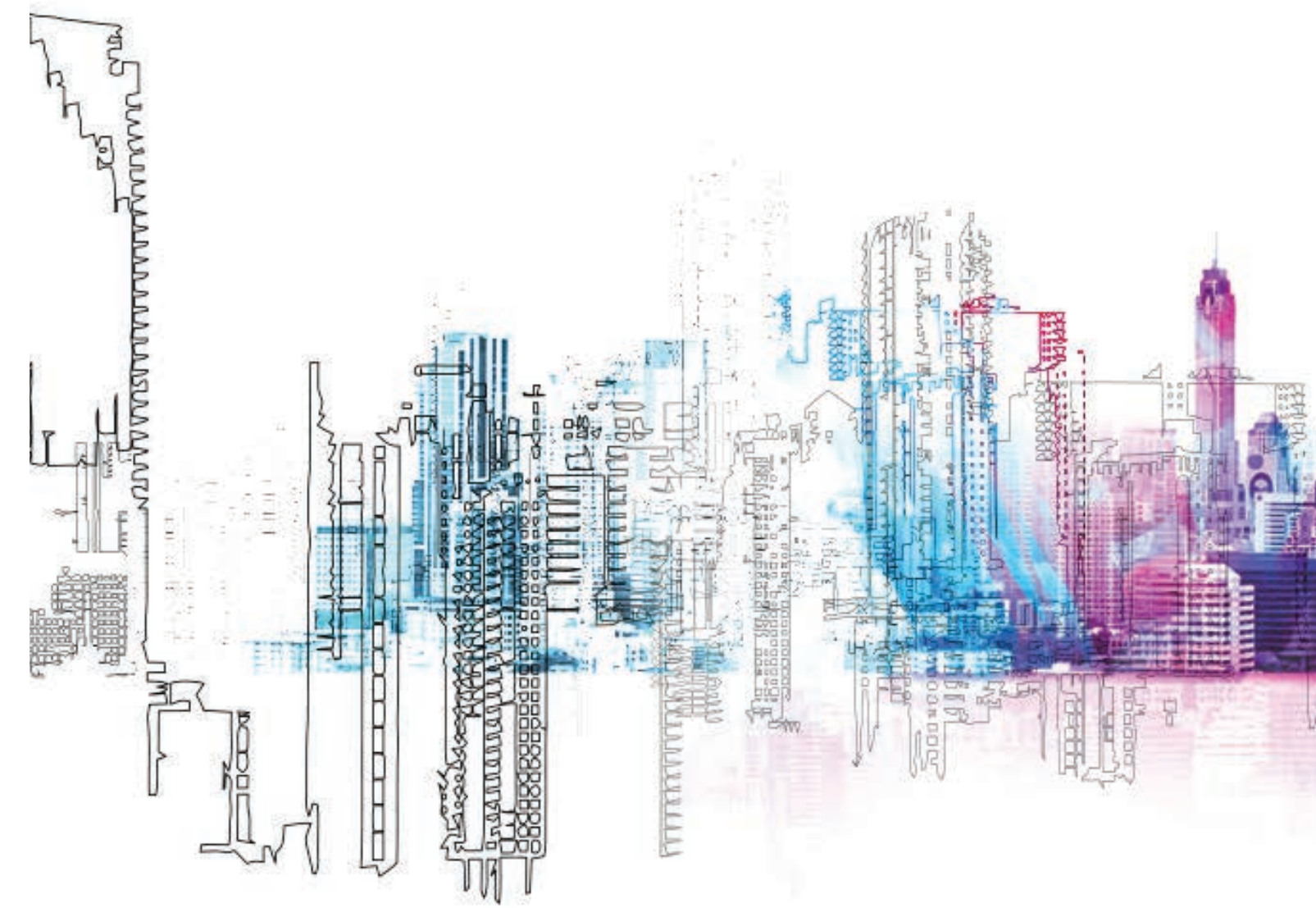
For more information and manual check: www.ledtura2share.eu

ENVIRONMENTAL PROTECTION

Waste electrical products should not be disposed of with household waste. Please recycle where facilities exist. Check with your Local Authority or retailer for recycling advice.




QUICKSTART GUIDE





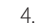
CTOUCHimPD05V180131

POWER ON / OFF

TURNING THE CTOUCH INTERACTIVE DISPLAY ON OR OFF

1. Plug the power cord into an AC power outlet.
2. Press Power Switch on the CTOUCH interactive display.
3. Now the CTOUCH is in standby mode. Wait a moment until the power indicator lights up, then press  to turn on the CTOUCH interactive display.

NOTE: Be sure to wait for a few seconds before pressing  button. If you promptly press  button then the CTOUCH interactive display may not respond or act wrongly.

4. Press  button again to turn off the CTOUCH and put the display in standby mode.
5. To cut off the power completely, press Power Switch on the back of the CTOUCH.

NOTE: If the CTOUCH interactive display does not receive a displaying signal for a certain time, the CTOUCH goes into standby mode.

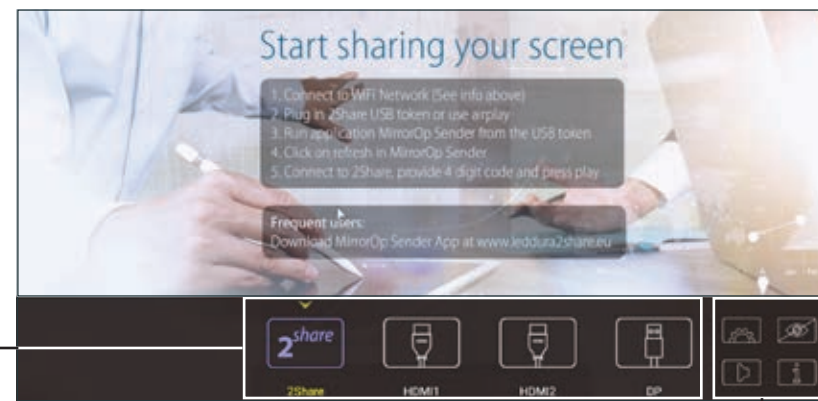
CONNECTIONS

- When connecting an external device to the CTOUCH interactive display, make sure that the CTOUCH and the external device are turned off.
- Check the plugs at the ends of the cables to make sure that they are the correct type before plugging them into the jacks on the CTOUCH interactive display.

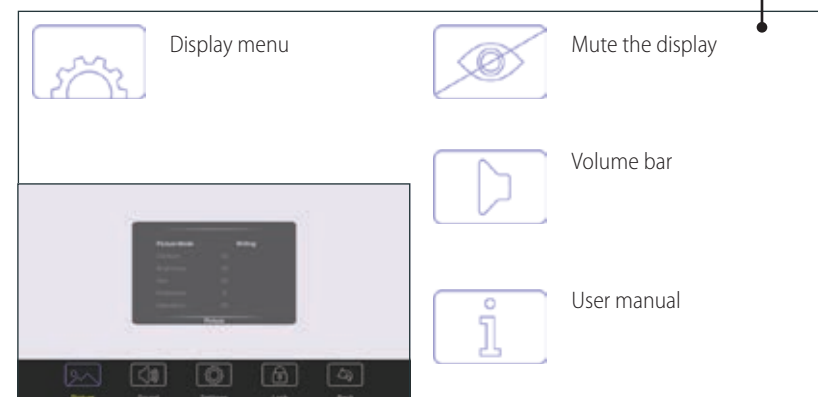
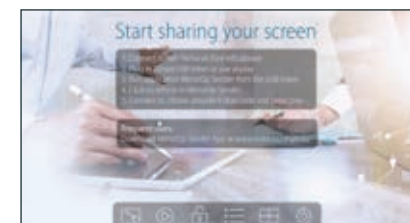
NOTE: For an overview of the possible external connections, please refer to the CTOUCH user manual!

OPERATING THE NAVIGATION BAR

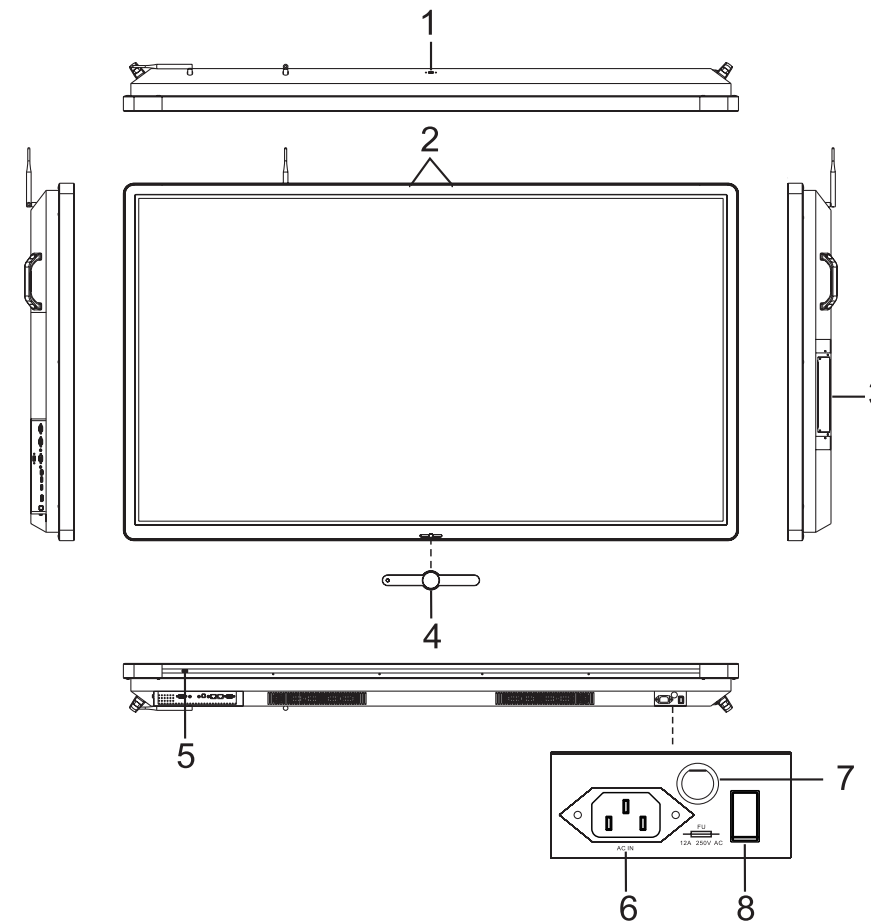
Press on CTOUCH Button to switch input and access settings menu or slide up from the bottom of the screen center by two or more fingers to activate the input and settings menu.



Source menu:
Note: This menu is dynamic as the icons can be enabled or disabled.

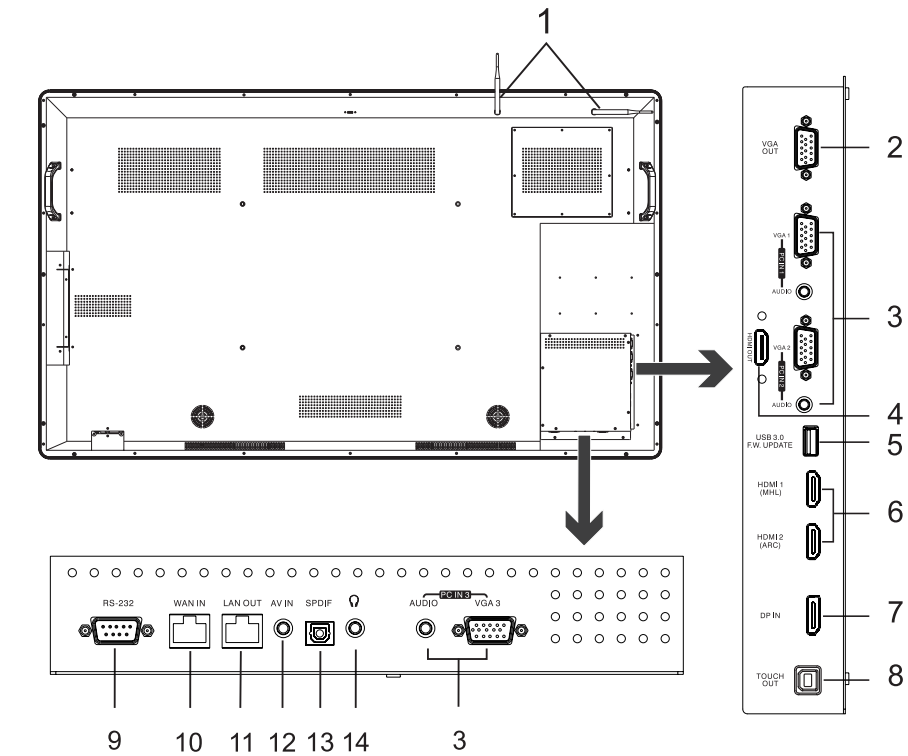


CONTROL PANEL



nr.	Description
1	USB(2.0)(for camera) This port is connected to internal PC solutions. Notes: 1. Please open the dust cover before being used. 2. It can perfectly support camera's up to 720p.
2	Microphone Far field audio input for internal PC solutions.
3	OPS module slot Insert an OPS module (Optional)
4	Power LED Red: In standby mode. White: In power on mode.
CTOUCH Button	Remote control sensor Aim the remote control towards this spot on the CTOUCH interactive display.
	Power Press to turn on or off the CTOUCH interactive display. Note: When the CTOUCH interactive display is turned on, press the button in middle to show the navigation bar. Press the button for about 2 seconds and the screen will go into stand-by mode.
5	USB Connect USB devices to this port for OPS and 2Share solutions.
6	AC IN Plug the AC cord into this jack and into a power outlet. (AC 100-240V 50/60Hz)
7	Fuse 12A 250V
8	Power Switch Push (1) to connect the power, push (0) to cut off the power. Note: Don't cover the power switch.

CONNECTION PANEL



nr.	Description
1	Antenna WiFi antenna. (Tighten the WiFi antenna in clockwise direction)
2	VGA OUT Output of the currently selected PC IN 1/2/3 signal.
3	PC IN1/2/3 Connect the video/audio of a computer to these ports.
4	HDMI OUT Connect an external display to this port, output of the current source.
5	USB3.0 For software upgrades.
6	HDMI1/2 INPUT Connect an HDMI or DVI device to this iack. HDMI1(MHL): Connect a MHL- enabled device such as a smart phone to this jack to view the external device's screen on your screen. HDMI2(ARC): Connect an ARC-enabled home theater receiver to this jack.
7	DP(DisplayPort) INPUT Connect an external device to DP out jack.
8	TOUCH OUT Output for external devices connected to PCx, HDMIx or DP ports, which support touch systems.
9	RS232 For remote control of the CTOUCH interactive display.
10	WAN IN The built-in router input port. Connects the external network.
11	LAN OUT The built-in router output port. Connection to another computer or other Internet enabled devices.
12	AV IN Input port for composite video.
13	S/PDIF digital audio output Connect a digital sound system to this S/PDIF socket.
14	AUDIO Connect headphones to this jack. The current selected source is audible.

Note: If the VGA does not get any signal it will go into stand-by after two minutes, while others source does not get any signal it will go into stand-by mode after 10 minutes.