

**CTOUCH**<sup>®</sup> Smart innovation!

Laser

Leddura xts 84 inch

Lexinus

Mensa



## Leddura Series

When state of the art innovation is leading.

The professional touch display for interactivity. Experience increased productivity, enhanced collaboration and efficient training possibilities.

- Surface light Wave technology, fast and accurate
- 20 point touch - use 20 fingers at the same time
- Collaboration and connectivity - stay connected
- CTOUCH OPS & Soundbar ready - for flexible but heavy duty power
- Best service & support - extendable up to 7 years!
- Built in Android

## Make every experience great!

The CTOUCH Leddura xts interactive touch display is designed to experience full functionality, full extendibility and full satisfaction in a collaborative environment. The stylish combination of a slim bezel with aluminum trim brings the allure of advanced classic design to your meeting room, huddle space, boardroom or even training facility. By integrating advanced C2C Technology, specially created for high performance, you're able to enhance experience, functionality and connectivity of the touch display in every way.

### Android OS

In addition to the input ports needed to connect to different OS systems, the CTOUCH Leddura xts possesses the most updated version of a fully operational 4K resolution and Android OS. Furthermore, the most powerful chipset available allows users to smoothly share interactive, 3D content for educational and gaming purposes, and to browse several apps.

### Home Key & Touch OSD

Provided with only one button, the CTOUCH Leddura xts is as simple as it is clear: user experience becomes easy and pleasant. The home key is timesaving: it reduces unnecessary actions while switching the display on/off or changing input sources. All function buttons are located in the on-screen display menu and all have vivid icons that clearly illustrate their functionality. This way, users will never confuse buttons, and children won't accidentally push the wrong button.



### 4K Image & 60Hz motion

The CTOUCH Leddura xts has adopted the most optimal resolution and frame rate for presenting, watching and playing games. The whole xts range offers 4K resolution and whenever you draw, erase or paint, your work gets smoother and faster than in ordinary 30Hz frame rate display. With this frame rate, users get not only the highest image quality (4K), but also the highest motion quality (60 Hz).



### C2C collaboration box and OPS module

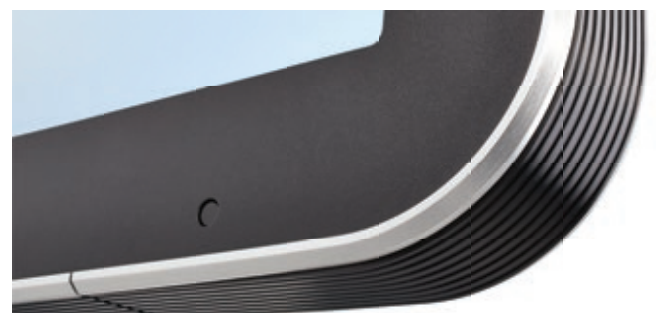
The CTOUCH Leddura xts is modularly extendable an optional collaboration box and the OPS module. The C2C collaboration box allows you to connect with everyone in the room, through one single action. It is also possible to add connection ports, to create better access from the front, and to save your work on to a USB memory stick.



The OPS module is an Intel® OPS compliant mini PC for Interactive Touch Displays and Digital Signage applications.

### Live quad picture view

Live quad picture view shows 4 input sources in real time. Besides usability to see a live quad view of the current Android, Windows, connected device or other input source, this feature also enables multi window and control room possibilities.



### Safety: rounded angles & protective film

The corners and edges of the display are curved for additional safety. Also if the glass is cracked or broken, it doesn't shatter into lots of pieces, and stays as a whole unit due to the special protective film covering the display. The surface of the display is scratch resistant and prevents objects from leaving any marks that would hinder performance and use.



## Product number

- Black bezel: 10053410

## Touch system

- Multi-touch technology: Surface Light Wave
- Touch points: 20 points
- Touch tool: Any opaque object, finger, gloved hand, brush or stylus
- Accuracy: ± 3 mm
- Read speed: ≤10 ms
- Effective screen size (mm): 1858.5 (W) x 1044.5 (H)
- Interface: USB 2.0 type B
- Supported OS:
  - Multi: Win 7, 8, 8.1 and Android
  - Single: Win XP, Vista, 7, 8, 8.1, Linux, Android, Mac, Chrome
- Touch driver: Not required

## Panel

- Diagonal size: 84.04" (2134.616 mm)
- Panel resolution: 3840 x 2160 @120 Hz
- Recommended resolution: 3840 x 2160 @60 Hz
- Brightness (Nits): 350 cd/m<sup>2</sup>
- Contrast ratio: 1600 : 1
- Response time: 5 ms
- Aspect ratio: 16 : 9
- Display colour: 1.06 Billion colours
- Pixel pitch (mm): 0.4845 (W) x 0.4845 (H)
- Back light unit: Edge type LED
- Anti reflective glass: 4 mm tempered 9H

## Connectivity

- Video input (digital): DisplayPort 1.2 x 1, HDMI 2.0 x 1, HDMI 1.4 (MHL) x 1, HDMI 1.4 (ARC) x 1
- Video input (analogue): RGB
- Audio input: Stereo phone jack x 1
- Audio out: Stereo phone jack x 1, SPDIF optical x 1
- USB (for touch): Touch USB 2.0 type B x 1, USB type A 2.0 x 1
- Network controllable input: RS232C x 1
- Network output: RJ45 (giga bit, WAN) x 1

## Features / Convenience

### VIDEO

- PSM: Warm / Cool / Normal / User
- Picture mode: Cinema / Original / Normal
- Freeze function: Yes

### SOUND

- Stereo: MTS (Stereo / Mono)
- SSM: Standard / News / Music / Movie / Custom
- Equalizer: 2 band
- Built in speakers: 12W 2ch RMS

### FUNCTION

- Touch OSD: Via home button
- All languages: English / Russian / Arabic / Japanese / Korean
- Internal CTOUCH PC module: OPS compliant
- CTOUCH Soundbar ready: Yes

## Dimensions

- Dimensions (mm): 1962.7 (W) x 1153.7 (H) x 101 (D)
- Product weight: 106 kg
- VESA mount (mm): 600 (W) x 400 (H)
- Green approvals: RoHS, ErP compliant
- Regulatory approvals: CE, KC, FCC, UL
- Thickness of safety glass: 4 mm

## Total cost of ownership

- Service & warranty: 3 years
- Power consumption BLU off: 74 W
- Power consumption (max): 530 W
- Power consumption sleep mode: < 1.1 W

## Product accessories included

- Accessories pack: AC power cable (EU 250 V/15A and UK 250 V/15A), HDMI cable (3 m), ethernet cable (3 m), remote controller and battery, user manual
- Connection software: Shipped with one licence
- Multi touch annotation software: Shipped with one licence
- Gesture recognition: -

## Android

- System version: Recent version 4.4 or higher
- CPU: Coretex A17 1.8 Ghz Quad Core
- GPU: 4K@60 Hz
- RAM: DDR3 2 GB
- Flash memory: 16 GB

## Extras

### CONNECTIVITY

- OPS Slide in PC: 10052012 or 10052013
- C2C Collaboration box: 10055010

### SOUND

- Soundbar: 10051902

### SUPPORT & TRAINING

- Support and training programs: Service pack up to 7 years spare parts

### SOFTWARE

- Oktopus & more on the CTOUCH software portal: On request

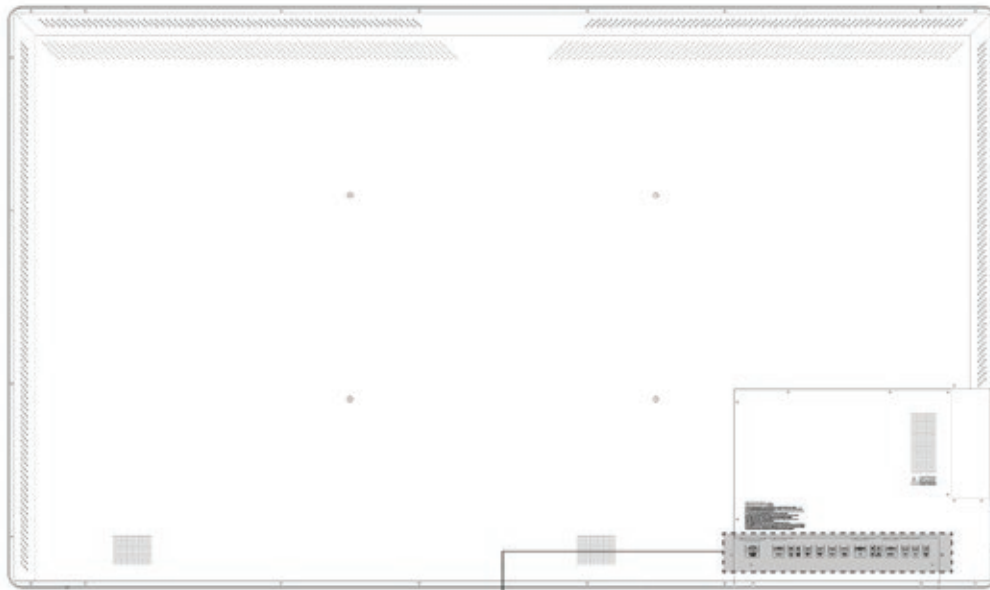
### MOUNTING

- CTOUCH Wallom wall lift - electric: 10080201
- CTOUCH WMT mobile lift - electric: 10080212
- CTOUCH WMT tilt table - electric: Not Applicable
- CTOUCH PC Shelf: 10080234
- CTOUCH Wallom extender: 10080214
- CTOUCH Wallom wall slider: 10080230

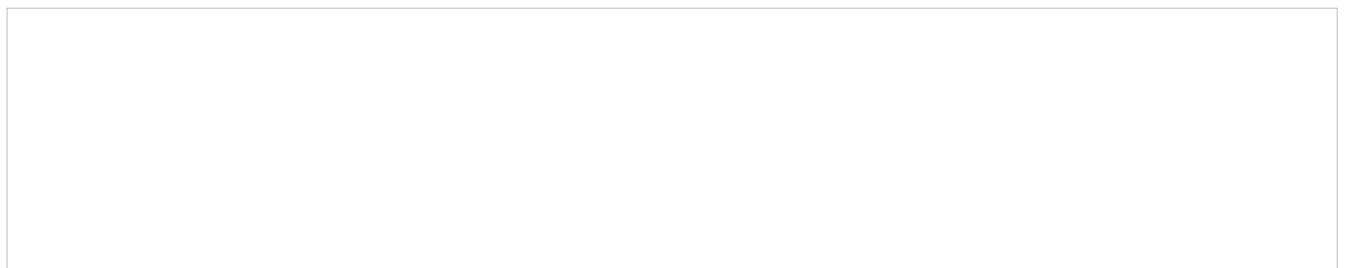
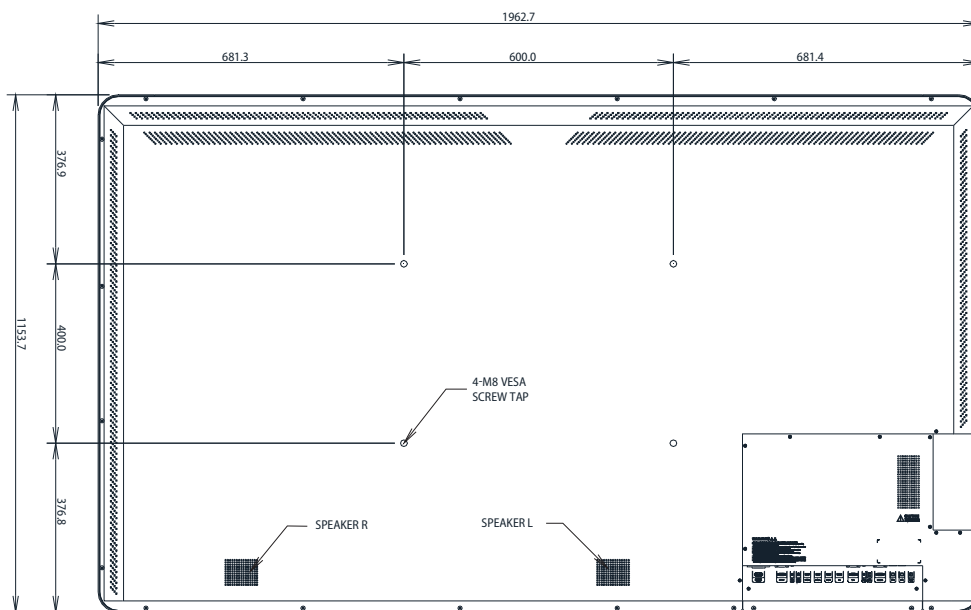
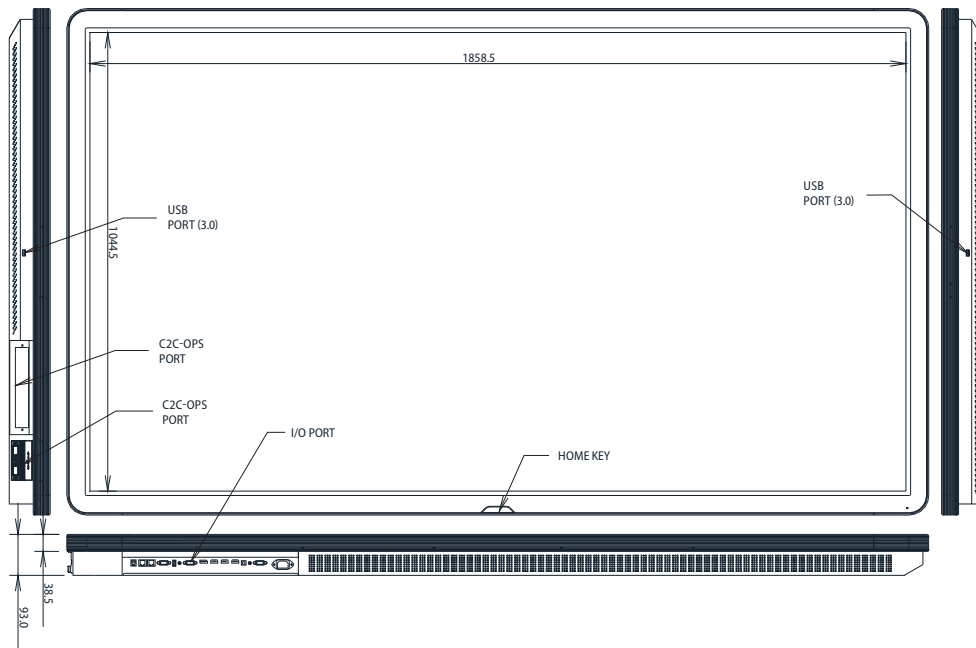
## Logistic information

- Box size (mm): 2220 (W) x 1360 (H) x 365 (D)
- Gross weight: 127 kg
- EAN no. 20 Point touch: 8718868301550

Viewing the connection panel



①	<b>AC INPUT</b>	Connect the power cord to this connector.
②	<b>SB Port</b>	Connect the sound bar.
③	<b>Line out</b>	Connect the external audio amplifier.
④	<b>Digital Audio output</b>	Connect the audio component by optical digital audio.
⑤	<b>HDMI 3</b>	Connect an HDMI device to this jack.
⑥	<b>HDMI 2</b>	Connect an HDMI device to this jack.
⑦	<b>HDMI 1</b>	Connect an HDMI device to this jack.
⑧	<b>DP</b>	Connect a display port device to this jack.
⑨	<b>VGA</b>	Connect a video from a computer to this jack.
⑩	<b>Line in (VGA)</b>	Connect an audio input for PC.
⑪	<b>USB (upgrade)</b>	Only use to upgrade.
⑫	<b>RS232C</b>	Connect the RS232C controller device.
⑬	<b>Wan</b>	Connect to the IFTD to your internet access point.
⑭	<b>LAN</b>	Connect to an external internet device.
⑮	<b>Sensor USB</b>	Connect to PC USB port for touch screen.



All rights reserved. CTOUCH products and services mentioned herein as well as their respective logos are trademarks or registered trademarks of CTOUCH Europe B.V.. All other product and service names mentioned are the trademarks of their respective owners.